

RV24 Venetian Motor User Manual

Applies to RV24-OE/OER/OEL Series(V01)

01 Features

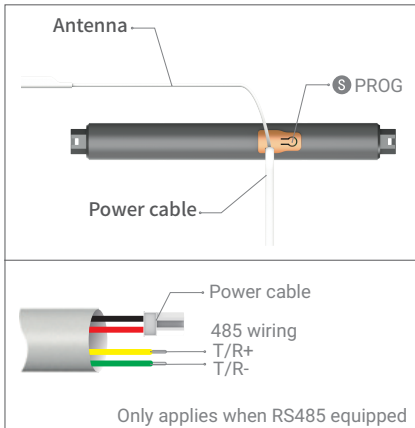
- Remote control ●
- Electronic limit ●
- Preferred stop position ●
- Gentle start gentle stop ●
- Stop while obstructed ●
- Rotation direction switch ●
- Independent dimming ●
- Memorized limits ●
- Adjustable speed ●

02 Attention

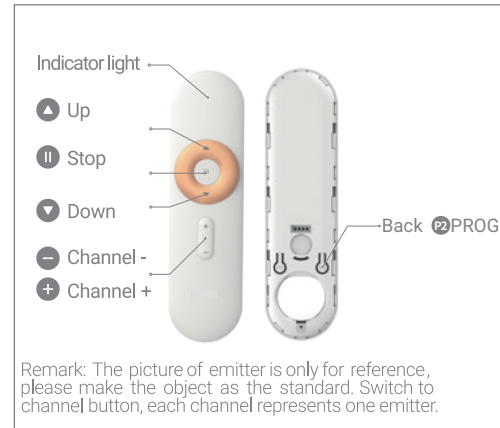
- This product is for indoor use only, do not use in damp environment or outdoors.
- Pay attention to moisture-proof, do not sprinkle water or other liquid on this product.
- Do not place the product near the heat source.
- If the product failure in use, please do not attempt to repair it by yourself, this should be done by an authorized professional.

03 Product description

Motor



Emitter



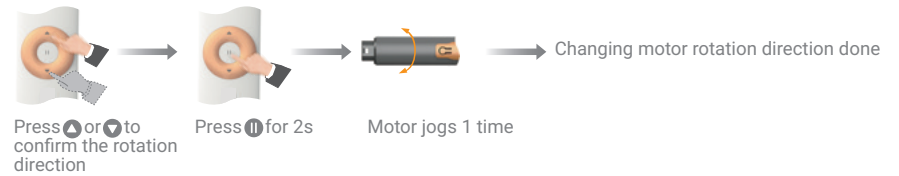
04 Operation steps

Note: Except motor goes up and down, operation success will feedback by motor jogs.

4.1 Pairing

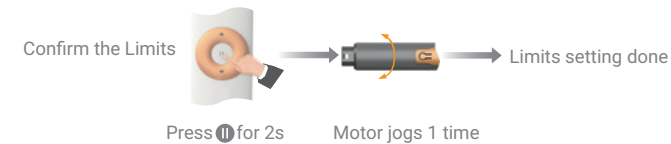
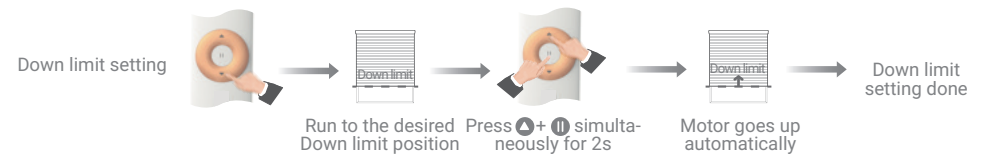
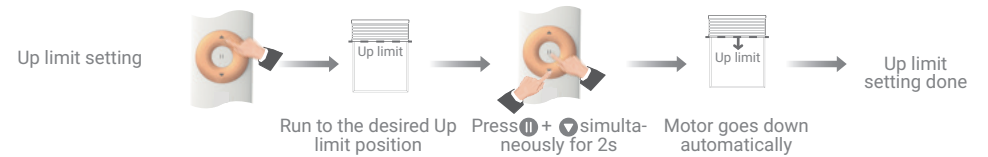


4.2 Change rotation direction



Note: This operation only applies before the Limits setting

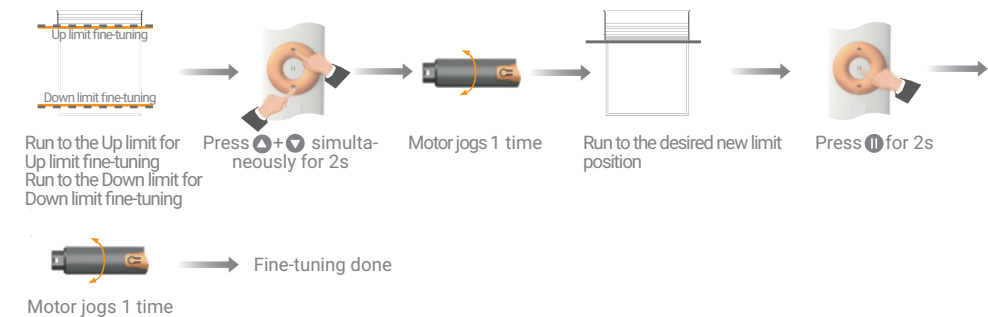
4.3 Limits setting



IMPORTANT:
Confirming the Limits is a MUST. Otherwise, motor will have high power consumption. And the Limits will disappear when the battery power is exhausted.

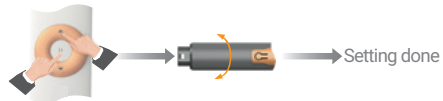
05 Function setting (should be proceeded after Step 04 done)

5.1 Limits fine-tuning



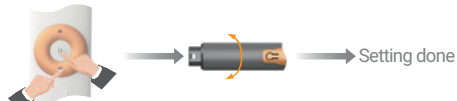
5.2 Speed Adjustment

Set High speed:



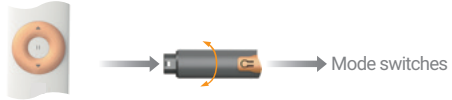
Press ▲ + ⏸ simultaneously for 2s
Motor jogs 1 time

Set Low speed:



Press ⏸ + ▼ simultaneously for 2s
Motor jogs 1 time

5.3 Roller mode (default) and Tilt mode

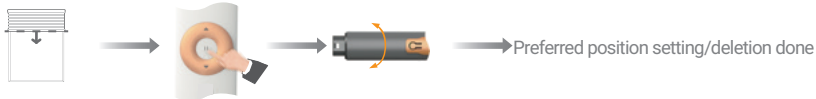


Press ▲ + ⏸ + ▼ simultaneously for 2s
Motor jogs 1 time

Note:

1. In Roller mode, briefly press ▲ or ▼, motor rotates continuously.
2. In Tilt mode, briefly press ▲ or ▼, motor rotates inchingly.
3. In Tilt mode, press ▲ or ▼ for more than 2s, motor rotates continuously.

5.4 Preferred position setting/deletion (set only between the Up and Down limits)



Run to the desired preferred position
Press ⏸ for 2s
Motor jogs 1 time

Note: When the shade stays in the non-preferred position, briefly press ⏸, the shade will move to the preferred position.

5.5 Adding emitter (each motor can be quipped with 12 emitters maximumly)

Method 1



Press Ⓢ PROG for 2s
Motor jogs 1 time
Briefly press the new emitter's back Ⓢ PROG
Motor jogs 1 time

Method 2



Press the paired emitter's back Ⓢ PROG for 2s
Motor jogs 1 time
Orange light flashes
Briefly press the new emitter's back Ⓢ PROG
Motor jogs 1 time
Orange light goes out

5.6 Deleting emitter

Operation 1: Delete one by one (if only one emitter remains, it can not be deleted)

Method 1



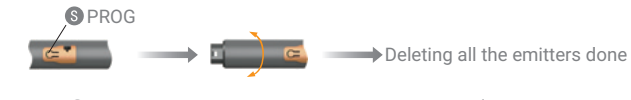
Press Ⓢ PROG for 2s
Motor jogs 1 time
Briefly press the paired emitter's back Ⓢ PROG

Method 2



Press the paired emitter's back Ⓢ PROG for 2s
Motor jogs 1 time
Briefly press the paired emitter's back Ⓢ PROG
Motor jogs 1 time

Operation 2: Deleting all the emitters



Press Ⓢ PROG for 7s
Motor jogs 2 times
(Note: Adding an emitter after deleting all the emitters, briefly press emitter's back Ⓢ PROG.)

5.7 Sleep mode



Press Ⓢ PROG for 2s
Motor jogs 1 time
Press Ⓢ PROG for 2s again (within 2 minutes)
Motor jogs 1 time,
Enter Sleep mode
Note: Motor will not respond to wireless emitter in Sleep mode. To exit Sleep mode, press Ⓢ PROG for 1s.

06 Restore to factory setting (if operation error, reset after restoring to factory setting)



Long press Ⓢ PROG for 12s
Motor jogs 3 times