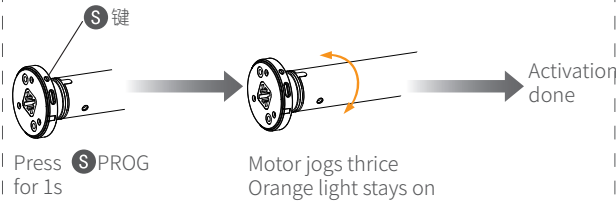


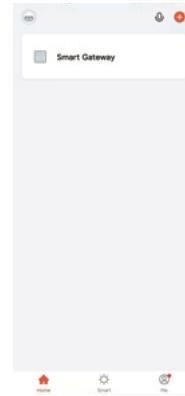
Built-in Tuya Zigbee User Manual

1. Activation
(Apply to Lithium battery motors, neglect this step if other motors)

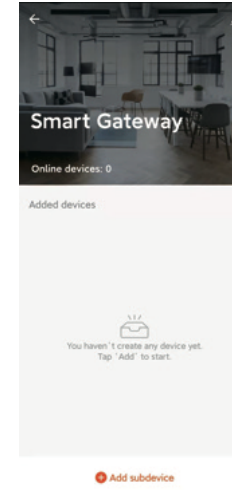


2. Turn on cellphone's Blue-tooth, connect Wifi, make sure of the Smart Gateway is on-line.

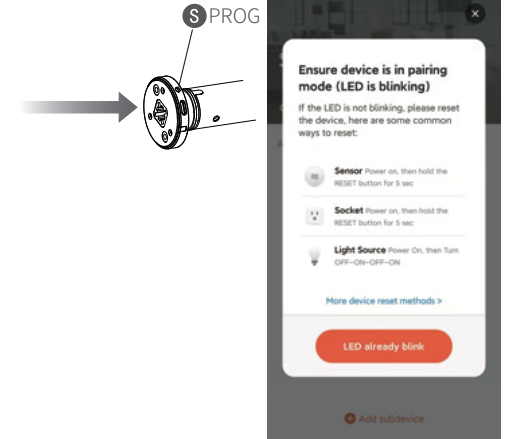
Note: Due to the upgrade and update of TUYA APP , discrepancies maybe found between actual operations and the manual description, please operate according to the TUYA APP inside instructions.



3. Tap "Add subdevice"



4. Fast press S PROG thrice, motor indicator light flashes. Tap "LED already blink".



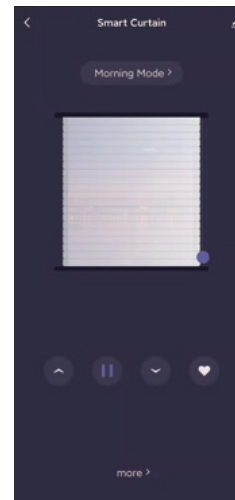
5. Tap "Done" when the device has been successfully added.



6. Name the device then tap "Done".

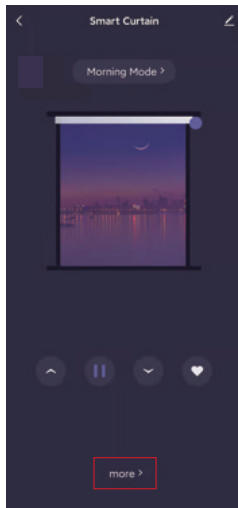


7. Enter the APP control page.

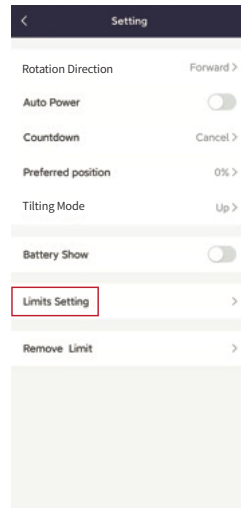


Limits Setting

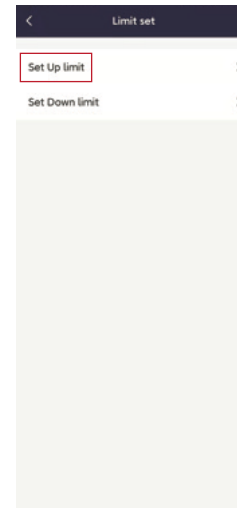
1. Tap "More" to enter the setting page.



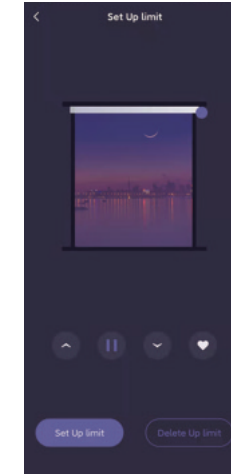
2. Tap "Limits Setting" to enter the Limits setting page. (If the motor rotation direction is opposite, please change the "Rotation Direction" first.)



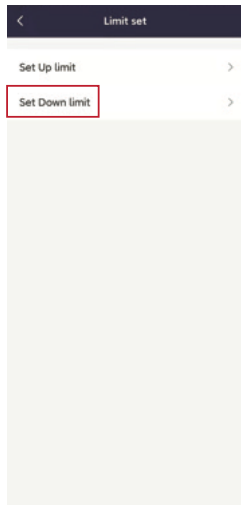
3. Tap "Set Up limit" for the Up limit setting page.



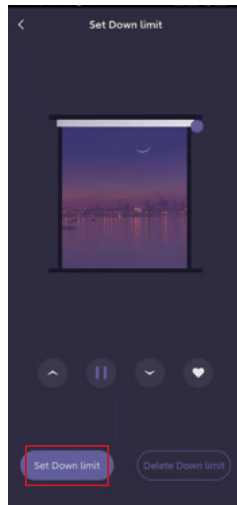
4. Tap or to the desired Up limit position, tap , the motor stops. Tap "Set Up limit". Up limit setting done. Motor runs downwards automatically, tap when it reaches the desired Down limit position.



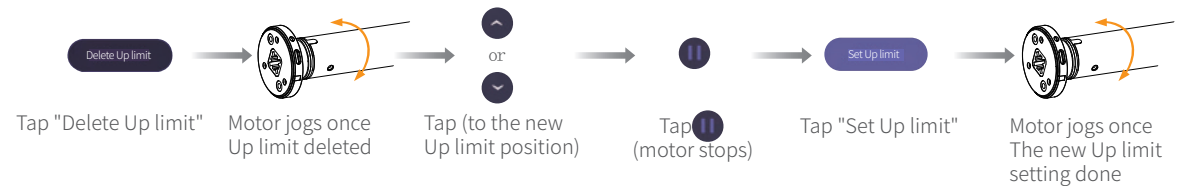
5. ① "Return" to the Limits Setting page.
② Tap "Set Down limit" for the Down limit setting page.



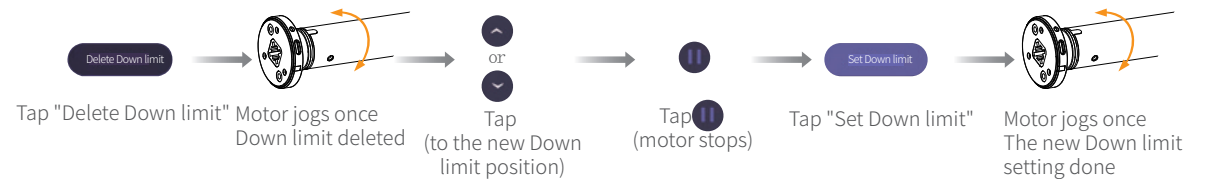
6. Tap "Set Down limit", Down limit setting done. Motor jogs once. Limits setting done.



Re-setting the Up limit (in the "Set Up limit" page)



Re-setting the Down limit (in the "Set Down limit" page)



Note: If to add emitters, after limits setting done, please refer to the Motor User Manual: Pairing (Step 4.2).