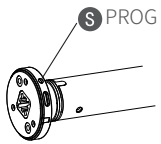


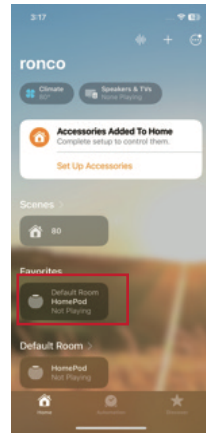
# Built-in Matter User Manual

## Apple

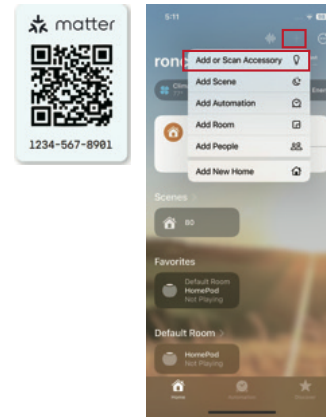
1. Follow the motor User manual to complete the limits setting first. If this is the first time to add Matter motor to a platform, press the motor **S** PROG 3 times, motor green indicator light flashes 3 times and then goes out, now it is ready for platform connection.  
(If the Matter motor has already been added to the platform, please skip this step)



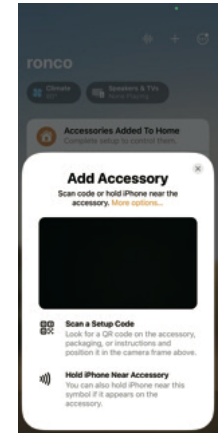
2. Turn on the cellphone's Bluetooth, connect Wifi and make sure of the Smart speaker is added and on-line.  
Note: Due to the APP updates and upgrades, the actual operation may differ from the description in the manual, please follow the APP instructions.



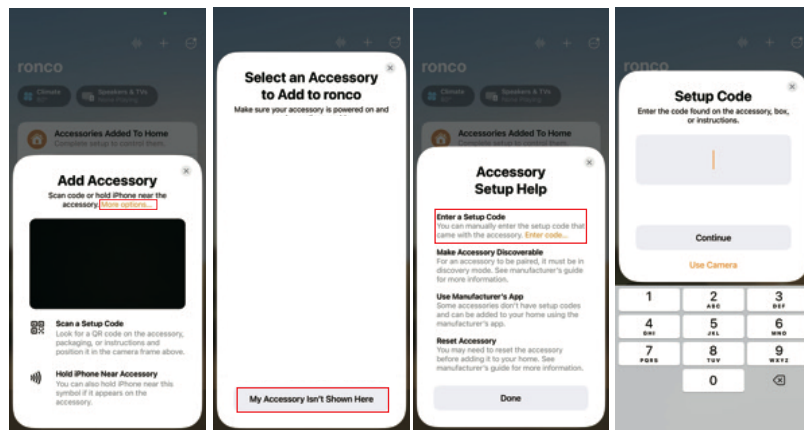
3. Open APP and add accessories  
Note: If Apple Home is not the first platform connected, Matter motor should be added through the pairing code( which is generated from the first platform, instruction of acquiring new codes is in the last page. Motor tube has one Matter QR code, and another two in the package, which can be pasted on the blinds for easy re-scanning.)



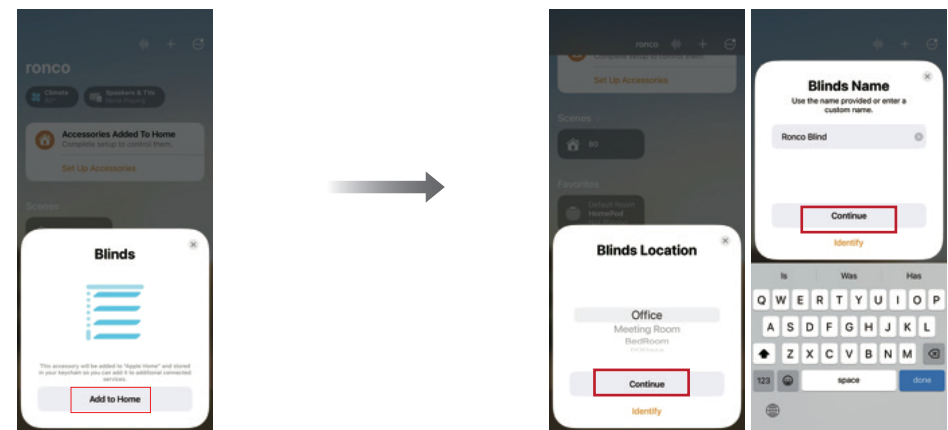
4. Connection  
Method 1: Scan a Setup code



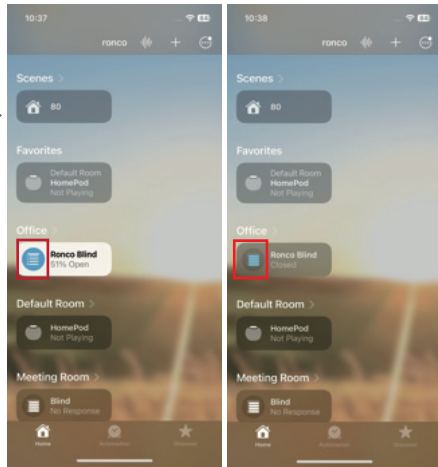
Method 2:  
Enter a Setup code (shared from the first connected platform)



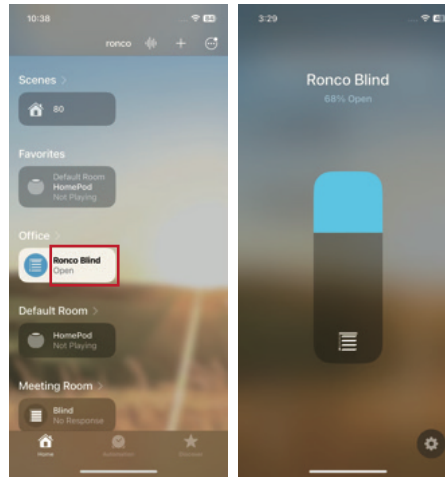
5. Motor will jog 2 times during the adding process, choose the Blinds location, enter a custom name, then continue.



6. Control  
Method 1  
Tap the red square area to open or close



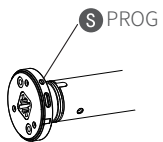
Method 2  
Tap the red square area then slid for opening %



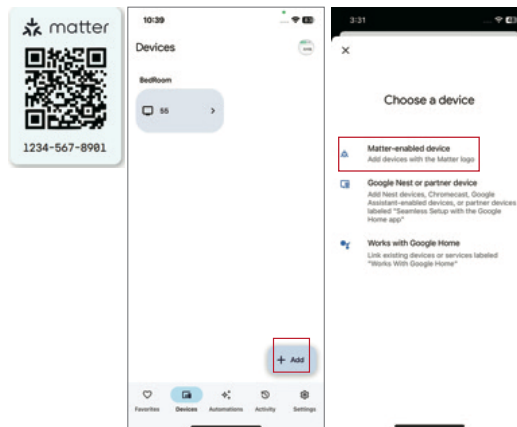
## Google

Turn on the cellphone's Bluetooth, connect Wifi and make sure of the Smart speaker is added and on-line.  
Note: Due to the APP updates and upgrades, the actual operation may differ from the description in the manual, please follow the APP instructions.

1. Follow the motor User manual to complete the limits setting first. If this is the first time to add Matter motor to a platform, press the motor **S** PROG 3 times, motor green indicator light flashes 3 times and then goes out, now it is ready for platform connection.  
(If the Matter motor has already been added to the platform, please skip this step)



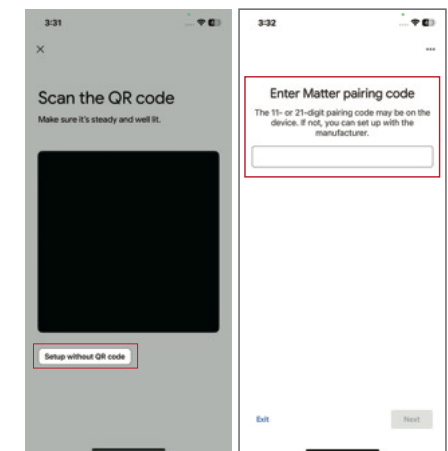
2. Open APP and add accessories  
Note: If Google Home is not the first platform connected, Matter motor should be added through the pairing code (which is generated from the first platform, instruction of acquiring new codes is in the last page. Motor tube has one Matter QR code, and another two in the package, which can be pasted on the blinds for easy re-scanning.)



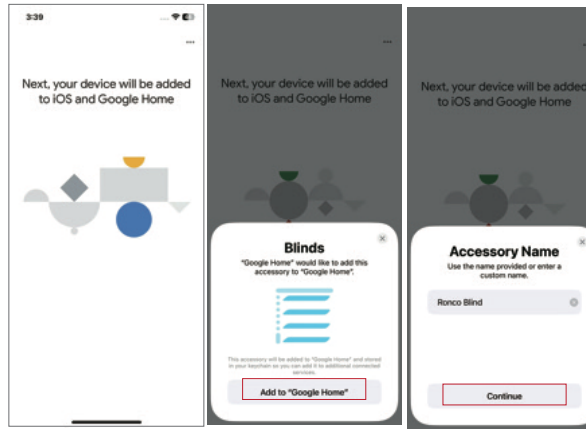
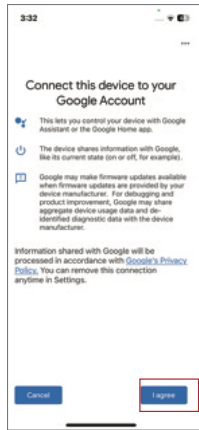
3. Connection  
Method 1: Scan the QR code



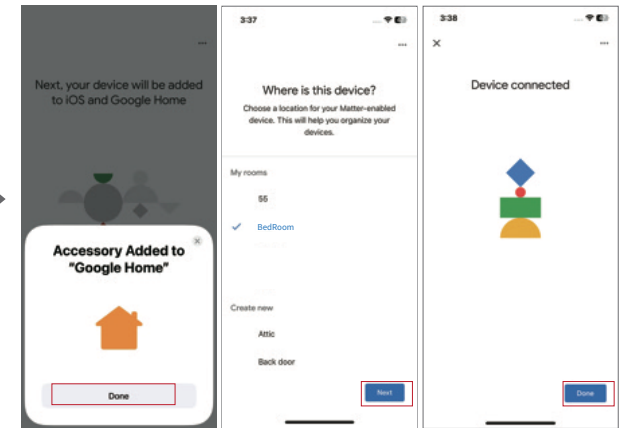
Method 2:  
Enter Matter pairing code (shared from the first connected platform)



#### 4. Connecting



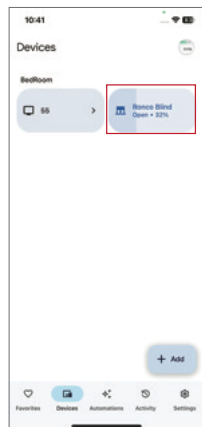
#### 5. Added to Google Home



#### 6. Control

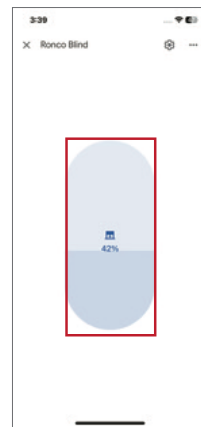
##### Method 1

Tap the red square area to open or close



##### Method 2

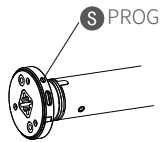
Slid to control the opening %



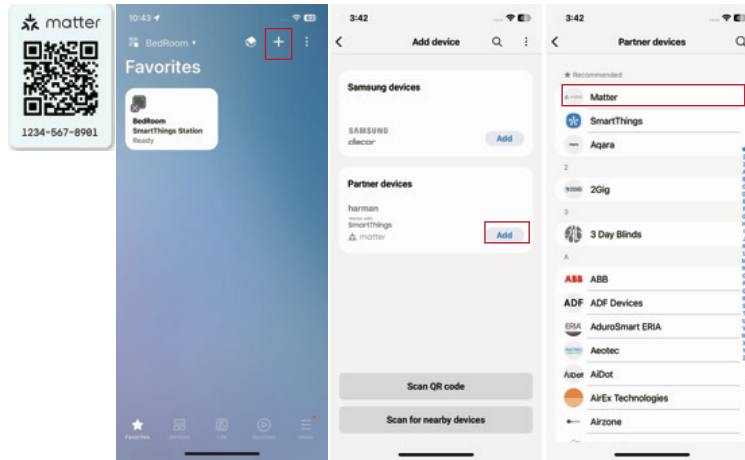
# SMARTTHINGS

Turn on the cellphone's Bluetooth, connect Wifi and make sure of the Smart speaker is added and on-line.  
 Note: Due to the APP updates and upgrades, the actual operation may differ from the description in the manual, please follow the APP instructions.

1. Follow the motor User manual to complete the limits setting first. If this is the first time to add Matter motor to a platform, press the motor **S** PROG 3 times, motor green indicator light flashes 3 times and then goes out, now it is ready for platform connection.  
 (If the Matter motor has already been added to the platform, please skip this step)

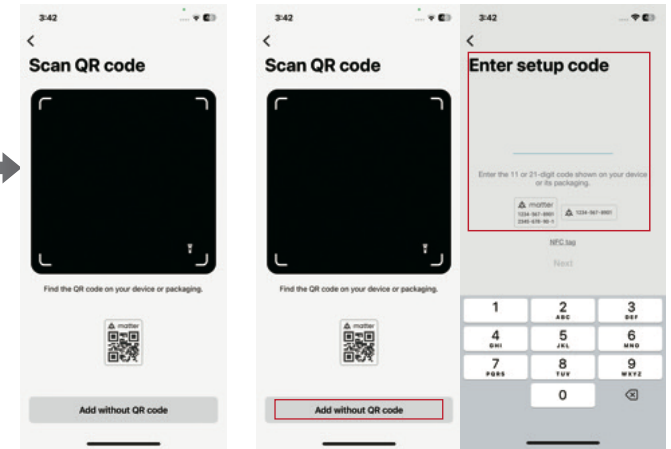


2. Open APP and add accessories  
 Note: If Smartthings is not the first platform connected, Matter motor should be added through the Setup code (which is generated from the first platform, instruction of acquiring new codes is in the last page. Motor tube has one Matter QR code, and another two in the package, which can be pasted on the blinds for easy re-scanning.)



3. Connection  
 Method 1: Scan a Setup code

Method 2:  
 Enter a Setup code (shared from the first connected platform)

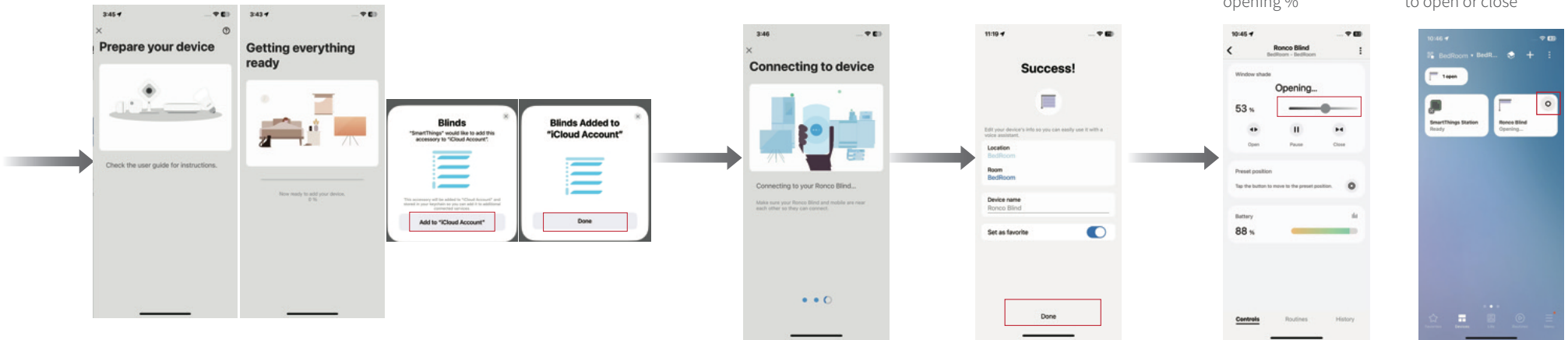


4. Connecting

5. Added to Smartthings

6. Control  
 Method 1  
 Slid to control the opening %

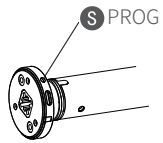
Method 2  
 Tap the red square area to open or close



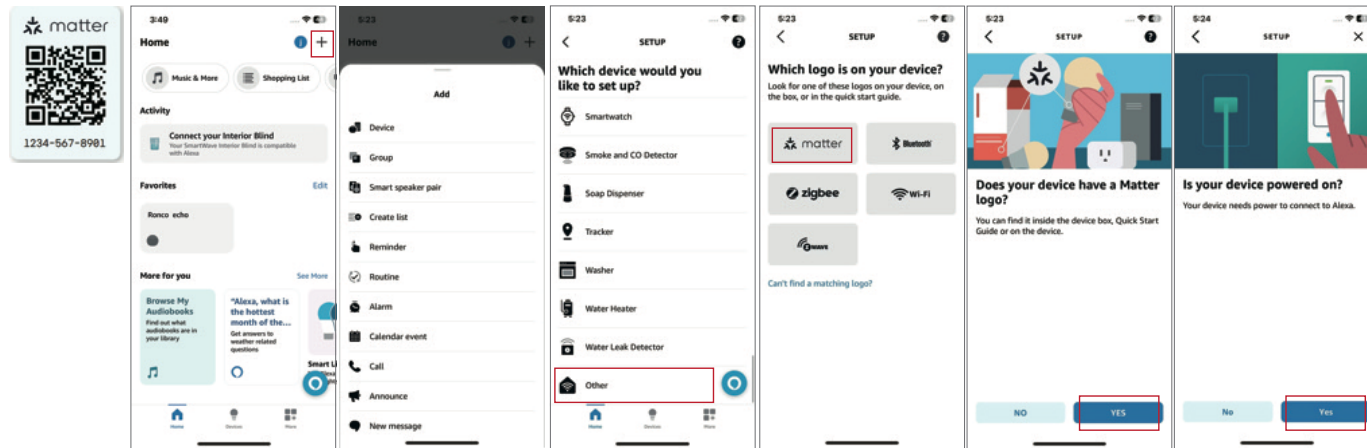
# ALEXA

Turn on the cellphone's Bluetooth, connect Wifi and make sure of the Smart speaker is added and on-line.  
Note: Due to the upgrade of the APP, the actual operation may differ from the description in the manual, so please follow the instructions within the APP.

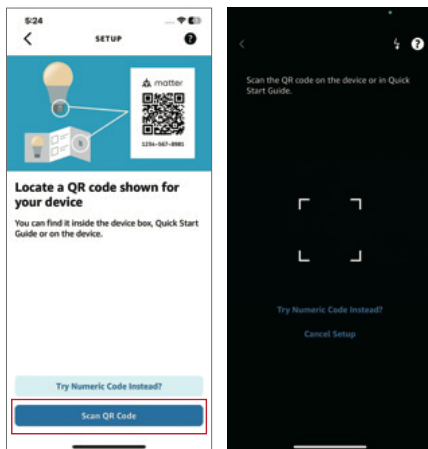
1. Follow the motor User manual to complete the limits setting first. If this is the first time to add Matter motor to a platform, press the motor **S** PROG 3 times, motor green indicator light flashes 3 times and then goes out, now it is ready for platform connection.  
(If the Matter motor has already been added to the platform, please skip this step)



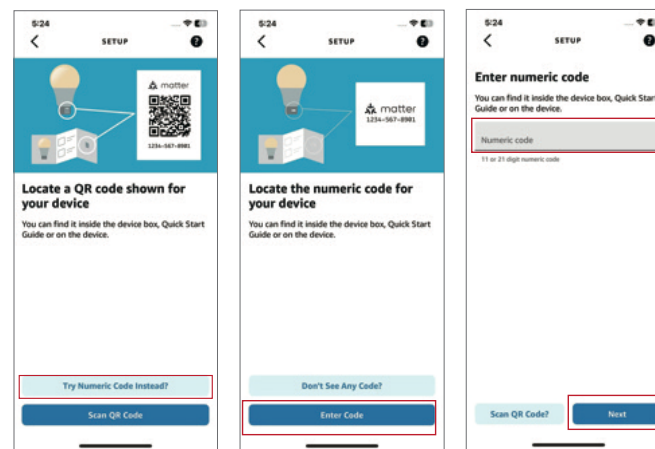
2. Open APP and add accessories  
Note: If Alexa is not the first platform connected, Matter motor should be added through the Setup code (which is generated from the first platform, instruction of acquiring new codes is in the last page. Motor tube has one Matter QR code, and another two in the package, which can be pasted on the blinds for easy re-scanning.)



3. Connection  
Method 1: Scan a Setup code



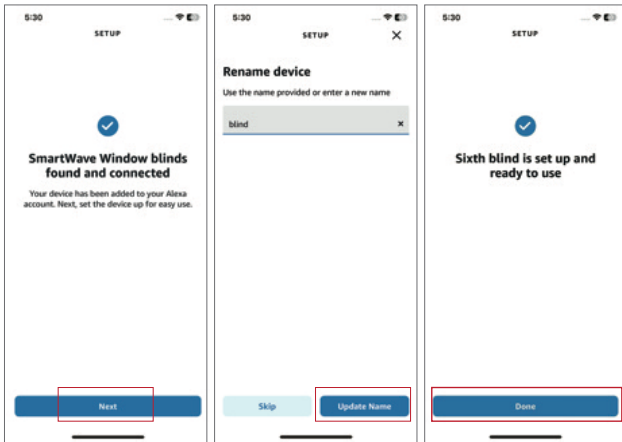
Method 2:  
Enter a Setup code (shared from the first connected platform)



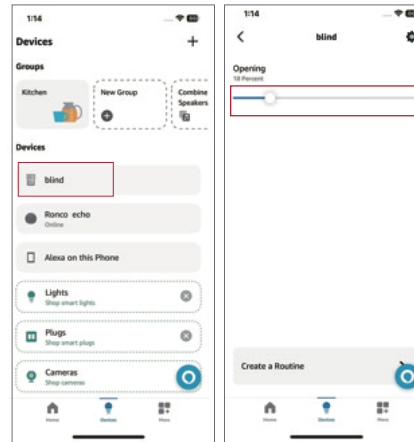
4. Connecting



5. Added to Alexa



6. Control  
Slid to control the opening %



Note:  
Below listed devices can be used as Edge Router to connect and communicate with other smart devices.



Apple TV 4K(3rd gen,128GB)  
Apple TV 4K(2nd gen)  
HomePod(2nd gen)  
HomePod mini



SmartThings Hub V3  
SmartThings Station



Echo Show 8 (3rd generation)  
Echo (4th generation)



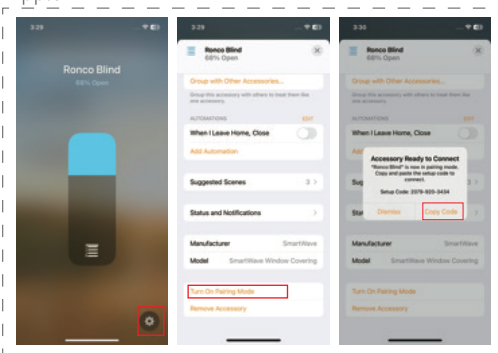
Nest Hub( 2nd gen)  
Nest Hub Max  
Nest Wif Pro

Cross-platform sharing:

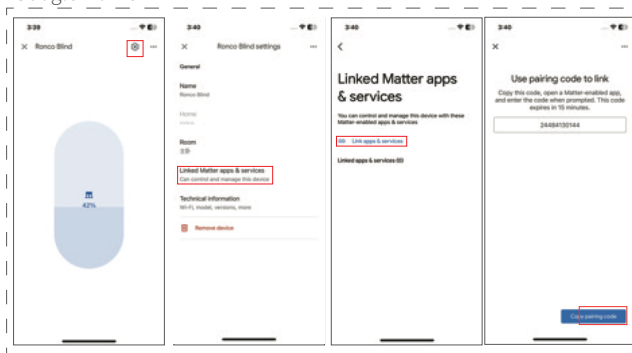
If you have a smart speakers (Apple, Google, Amazon, Samsung) and would like to be able to control smart blinds/curtains that support the Matter protocol. The smart blinds/curtains must be connected to one of the above THREAD-enabled devices. If you have connected Apple speaker (HomePod mini, for example), open the corresponding device page in the "HOME" app, and find "Turn on pairing mode" in the settings, you will get a new pairing code, then connect and pair with other apps or devices. Select the pairing code in Add Device to pair, and the subsequent process is the same as the new smart blinds/curtains.

1. Acquiring new paring code/setup code

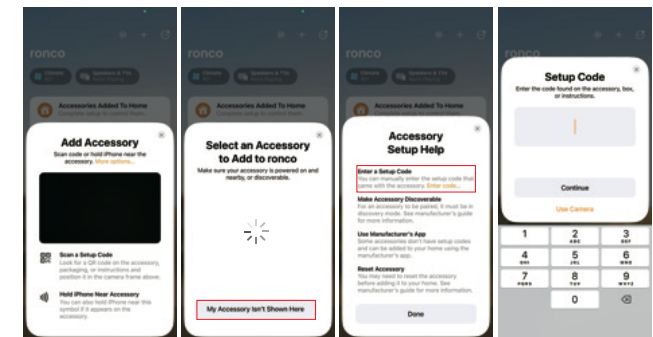
Apple



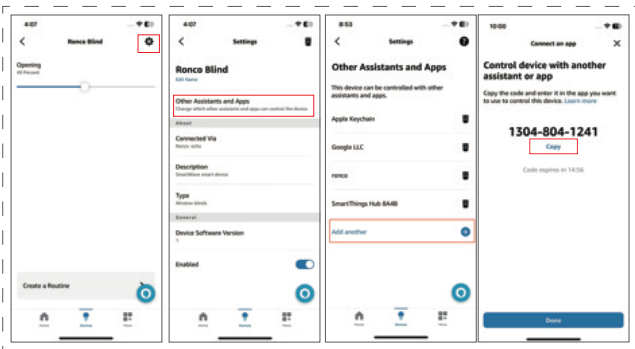
Google Home



2. Adding device by Setup code (take Apple as example, for other platforms, please check previous Manual pages)



Alexa



Smartthings

