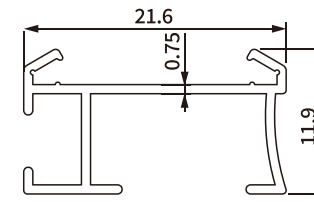
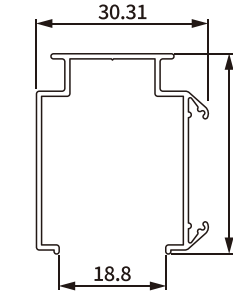


# ROMAN SHADES

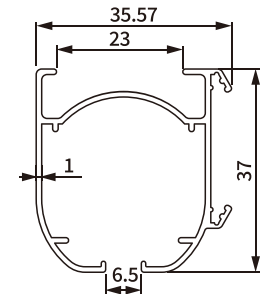
## ROMAN SHADES PROFILE



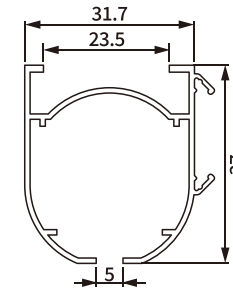
Item No.: SH-BA11-0218  
Weight: 0.121kg/m



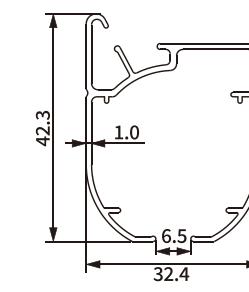
Item No.: SH-BA11-0219  
Weight: 0.284kg/m



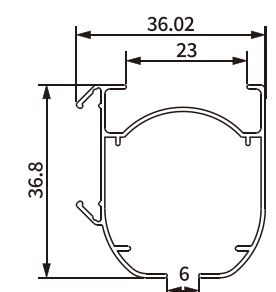
Item No.: SH-BA11-0220  
Weight: 0.409kg/m



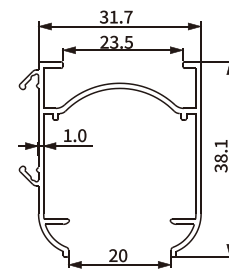
Item No.: SH-BA11-0221  
Weight: 0.392kg/m



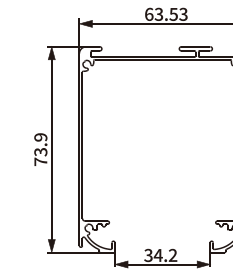
Item No.: SH-BA11-0222  
Weight: 0.427kg/m



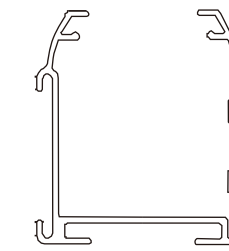
Item No.: SH-BA11-0223  
Weight: 0.327kg/m



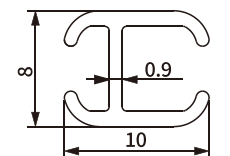
Item No.: SH-BA11-0224  
Weight: 0.385kg/m



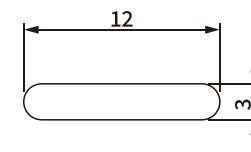
Item No.: SH-BA11-0225  
Weight: 0.966kg/m



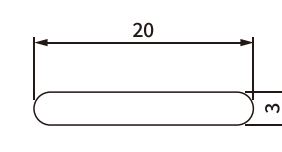
Item No.: SH-BA11-0232-0.9  
Weight: 0.377kg/m



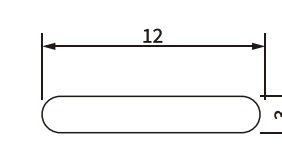
Item No.: SH-BA11-0226  
Weight: 0.076kg/m



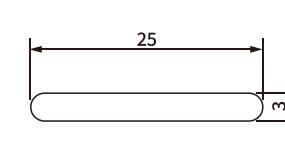
Item No.: SH-BA11-0227  
Weight: 0.093kg/m



Item No.: SH-BA11-0228  
Weight: 0.159kg/m



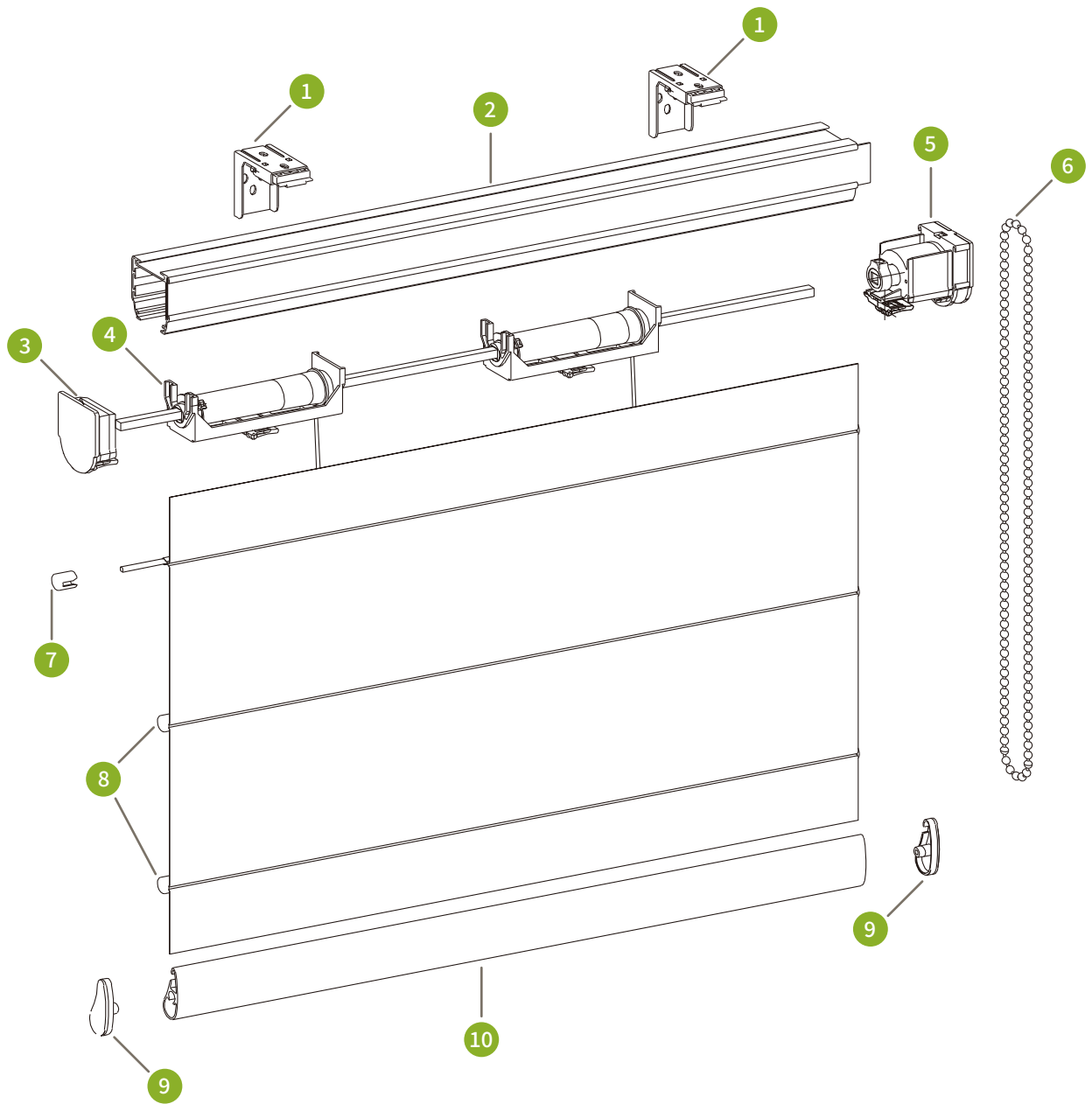
Item No.: SH-BA11-0229  
Weight: 0.063kg/m



Item No.: SH-BA11-0230  
Weight: 0.199kg/m



# ROMAN SHADES COMPONENTS



1 Bracket 2 Headrail 3 End Cap 4 Roller 5 Clutch 6 Ball Chain 7 End Cap of Stick

8 Stick of Roman 9 End Cap 10 Bottom Rail

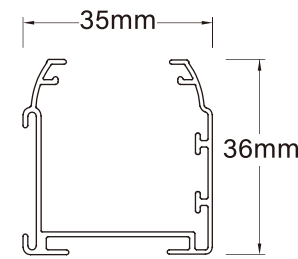
## COMPATIBILITY

For Roman Shades

## STRUCTURE & MATERIAL

Made with PA66+GF, PC, and POM  
5 planetary gears inside  
1:3.5 reduction ratio; energy saving up to 55%

## COMPONENTS FOR ROMAN SHADES



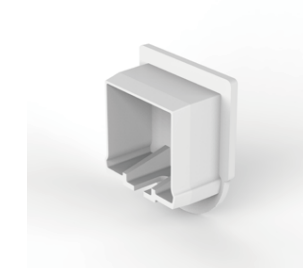
### Aluminum Headrail

Item No.: SH-BA11-0232-0.9



### Clutch (Generation 2)

Item No.: SH-BE1-0001



### Headrail End Cap

Item No.: SH-BE1-0002



### Bracket

Item No.: SH-BE1-0003



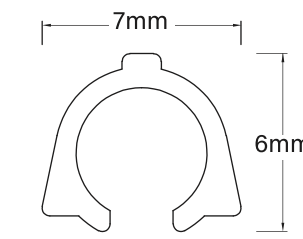
### Roller

Item No.: SH-BE1-0004



### Ball Chain

Item No.: SH-BE1-0059



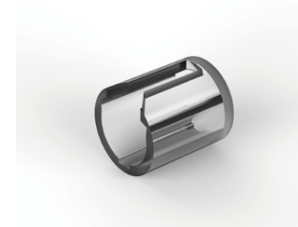
### C-Aluminum Bottom Rail

Item No.: SH-BA11-0209



### Middle Cover of C-Bottom Rail

Item No.: SH-BE1-0005



### C-Bottom Rail End Cap

Item No.: SH-BE1-0006



### Cord Adjust Button

Item No.: SH-BE1-0007



### Snap-Fit

Item No.: SH-BE1-0008